

STUST



**WELCOME TO
SOUTHERN TAIWAN
UNIVERSITY OF
SCIENCE AND
TECHNOLOGY!**

Campus View



DATE April, 2017

BY OIA, STUST

What we want to talk to you about:

- School Profile
- Available Programs
- Student Life /Features
- International Exchange
- Application Information



TSUKAS (JAPAN)
INVITING YOU TO
COME AND VISIT

School Profile - Location

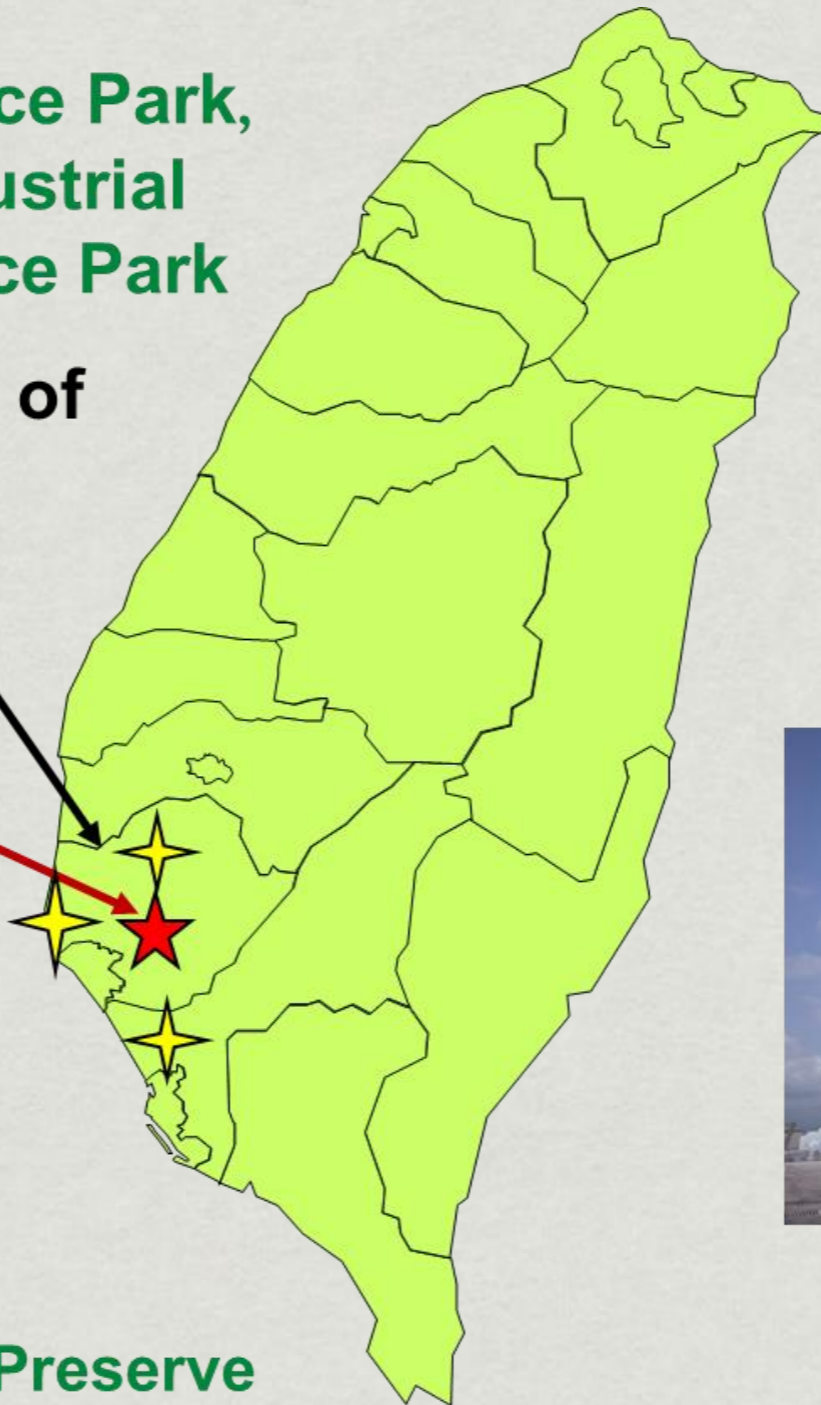
✦ Southern Taiwan Science Park,
Tainan Technology Industrial
Park, Kaohsiung Science Park

Tainan City (Population of
about 1.87 million)

★ **STUST**



Cigu Black-Faced Spoonbill Preserve



Tainan Confucius Temple



TSMC Fab

School Profile - History

**Southern Taiwan University
of Science and Technology**

**1999.08.01 Changed to University
2000.08.01 Started Master program
2002.08.01 Started Ph.D. program**

**Nan-Tai Institute
of Technology**

1996.07.01

**Nan-Tai Junior College
of Technology
and Commerce**

1990.08.01

**Nan-Tai Junior College
of Technology**

1969.12.15



School Profile



PRESIDENT
Dr. CHEIN TAI

CHAIRMAN
Mr. KAO-Huei CHENG

- * **Established in 1969**
- * **Campus Size: 16.5 Hectares**
- * **Location: Tainan City, Taiwan**
- * **4 Colleges: 24 Departments --- 28 Bachelor programs, 32 Master programs, and 4 Doctoral programs**



College of
Engineering

College of
Business

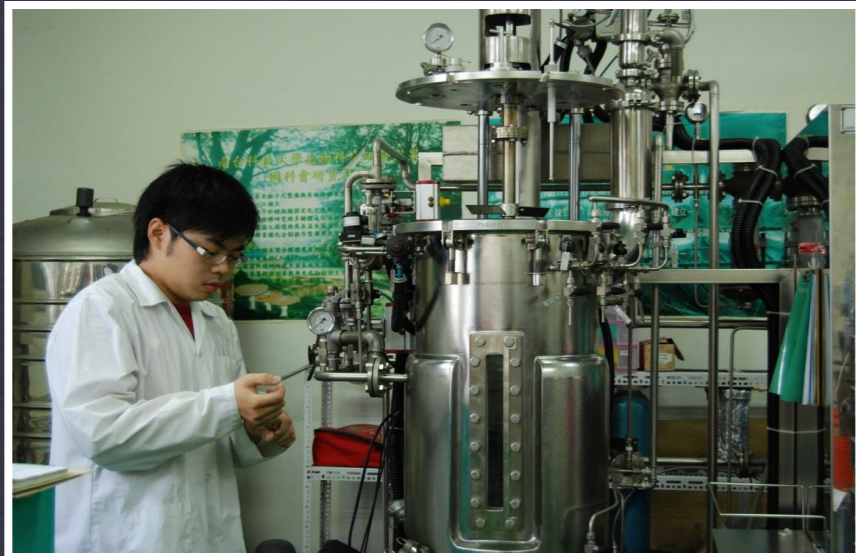
College of
Digital
Design

STUST

ORGANIZATION

College of
Humanities
and
Social
Sciences

| | |
|--|---|
| FULL TIME FACULTY | 559 |
| PART TIME FACULTY | 350 |
| STAFF | 194 |
| STUDENT BODY: 6th largest university in Taiwan | 18,441 (492 International Degree Students from 33 different countries) |



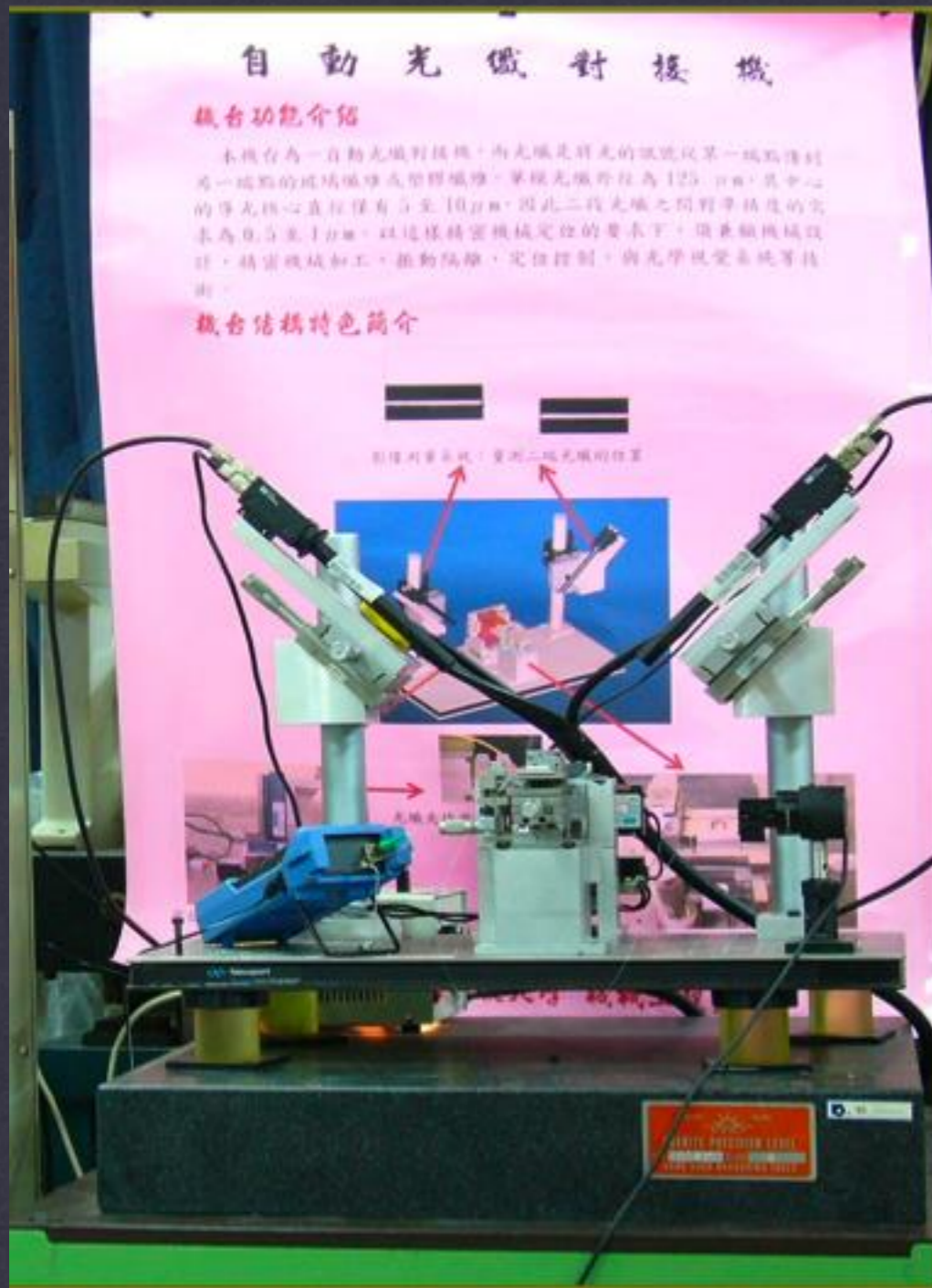
DEGREE PROGRAMS (ENGLISH-TAUGHT)

- **MECHANICAL ENGINEERING -- Ph.D. AND M.S.**
(Highly Recommended by MOE)
- **ELECTRICAL ENGINEERING -- Ph.D. AND M.S.**
(Highly Recommended by MOE)
- **GLOBAL M.B.A. -- GMBA**
(Highly Recommended by MOE)
- **MANAGEMENT AND BUSINESS -- Ph.D.**
- **INTERNATIONAL BUSINESS -- B.A.**
- **INTERNATIONAL FINANCE -- B.A.**



CHINESE LANGUAGE PROGRAMS

- **CHINESE LANGUAGE STUDY: Short & Long Term Study**
- **2-WEEK CHINESE LANGUAGE AND CULTURE CAMP**



PROJECT

Professionalism and Features

DATE

April, 2017

BY

STUST

STUST features such professional areas as mechatronics, robotics, bio-medical engineering, green-energy technology, micro/nano processing technology, seamless smart life technology, e-business, and international finance.

Precision Machinery Research and Development Center

Nanotechnology Research Center

Ancient Machinery Research Center

New Energy Center

Biomedical Electronics Center

Robotics Research Center

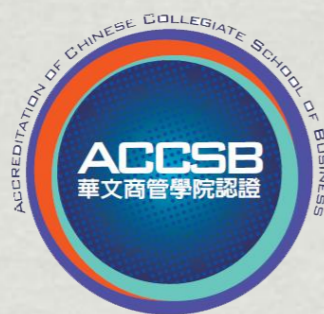
Optoelectronics Semiconductor Research Center

Center for Failure Analysis of OE and IC

Research Center of Biotechnology

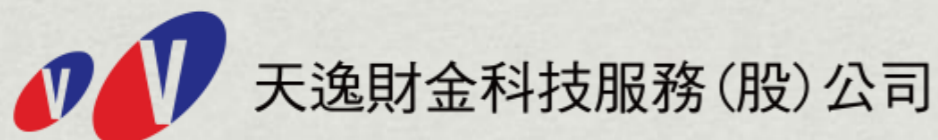
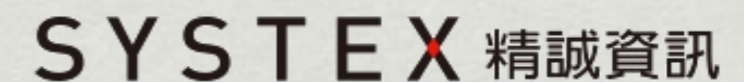
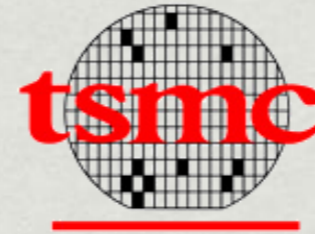
Electronic Business Research Center

Integrated Marketing Communication Center



- STUST emphasizes **industry and academia cooperation** and a real world curriculum. Teaching features are:

- curriculum meeting the demands of career,
- R&D achievements integrated into teaching,
- inviting experts from industries to co-teach,
- students participating in industry-academia research projects,
- encouraging students for internship,
- pushing CIE teaching (Creativity, Innovation and Entrepreneurship).



Campus Corners





The Library

EVENTS, MEDIA, MOVIE NIGHTS, PERFORMANCES, AND MORE..

The Library

- * MOVIE VIEWING ROOMS FOR YOU AND YOUR GROUP OF FRIENDS
- * SMALL AND LARGE STUDY ROOMS FOR GROUP WORK
- * FREQUENT EVENTS, PERFORMANCES IN THE LOBBY
- * MULTIPLE COPIES OF ALL REQUIRED TEXTBOOKS



E Library and Information Building



Student Life

TAKING A LOOK AT WHAT YOU CAN EXPECT....



YOHAS

A PLACE TO SHAPE YOUR BODY....

YOHAS....



Table Tennis



Aerobics Studio



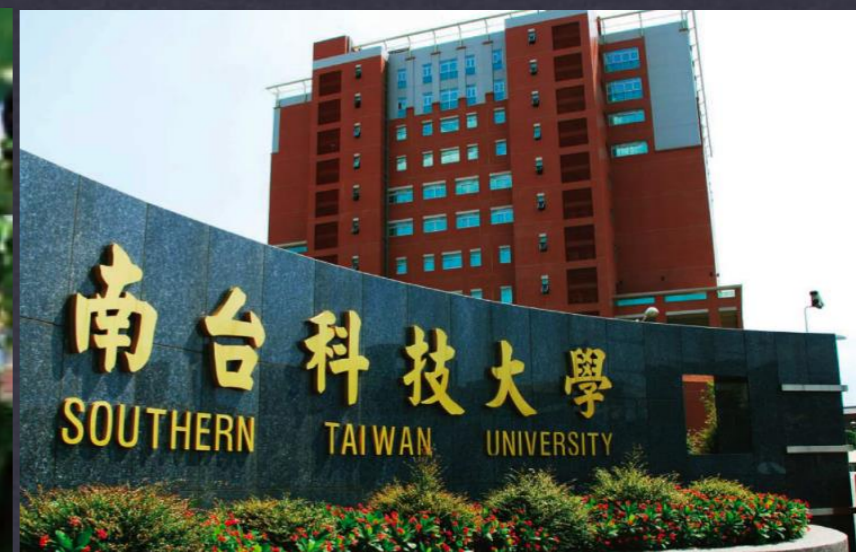
Gym



Gym



Badminton Court



The Dormitory
A PLACE TO REST YOUR HEAD....

Your Future Room....

- * Each room w/ total of 4, 2 or 1 people; foreign and/or local students
- * Access to washing machines, kitchen, prayer room



The rooms are moderately furnished with:

- + One bathroom
- + Bed without mattress
- + Wardrobe
- + Bookshelf
- + Desk
- + Telephone

Phone calls are available for inbound only.
Outbound calls are not available.





FOOD FOR ALL TASTES

ON AND OFF CAMPUS OPTIONS FOR EATING



MADINA TAINAN (HALAL FOOD STORE) 、
DAGING DAN DAGING OLAHAN HALAL
TAIWAN, WITHIN 5 KM FROM STUST
CAMPUS



THE LOCAL HANGOUT SPOT, GOOD
TEA, 24/7, CUTE “TEA GIRLS”, 1 MINUTE
FROM SCHOOL GATE



AMAZING NOODLES, FREE TEA, (WILL
ADD MORE NOODLES IF YOU ASK NICELY),
5 MINUTES FROM SCHOOL

LOCAL EATING



INTERNATIONAL STUDENT FESTIVAL

COOKING, CULTURAL PERFORMANCES, DISPLAY BOOTH, TRADITIONAL CLOTHING, AND MORE..



WHERE ARE YOU FROM?

A chance to get to know various different countries and their cultures

How much does it cost?

| Item | Cost |
|--------------------------------|--|
| Tuition | Approximately US\$1,500 to US\$1,800 per semester for both undergraduate and graduate students. |
| School dormitory | <ol style="list-style-type: none">1. US\$420 for a four-person room per semester2. US\$650 for double room per semester |
| Extra personal expenses | Approximately US\$2,400 per year (includes books, insurance, food, commodities, etc.) |

We Have To Pay?!.....Maybe Not!

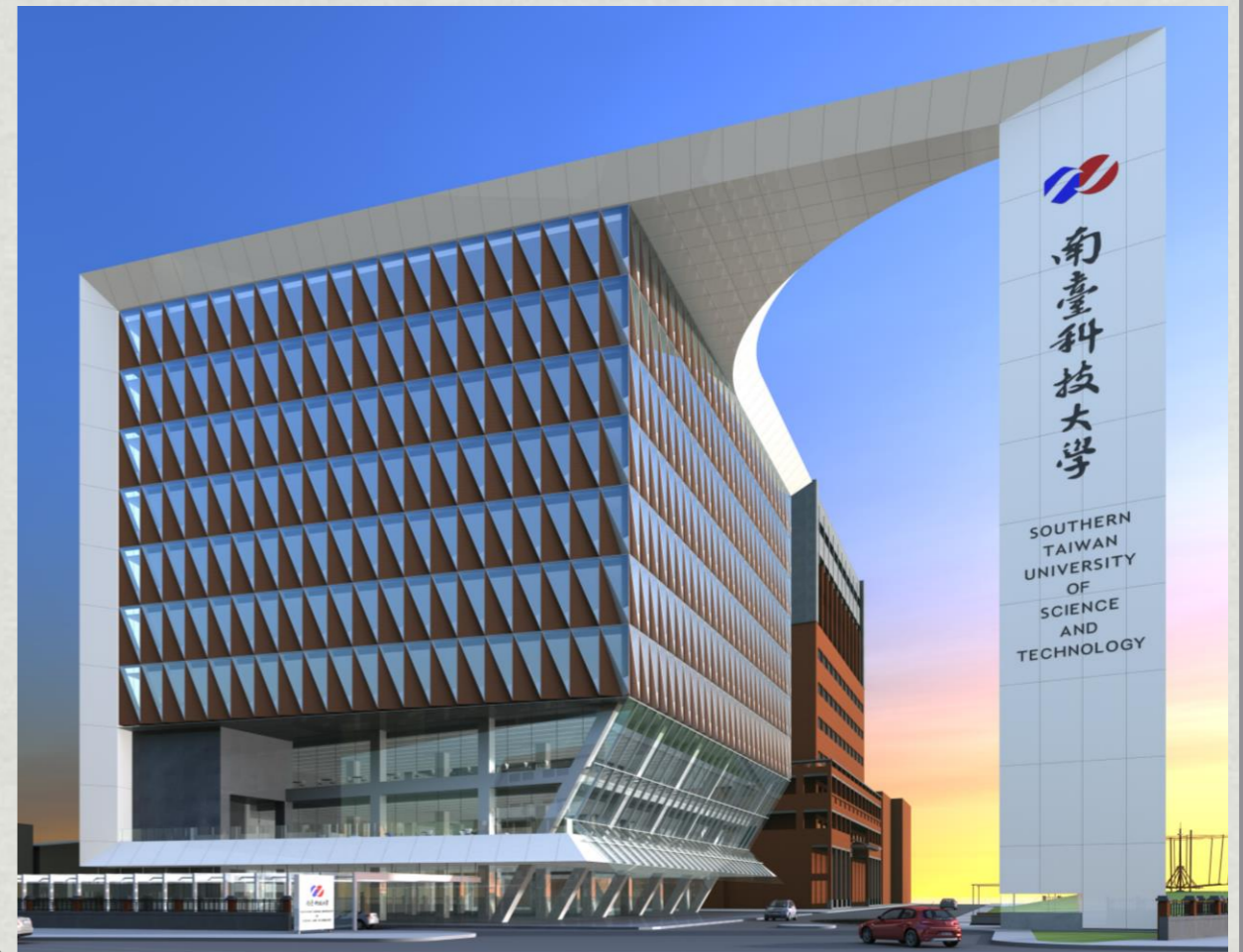
* Scholarships

- * Ph.D. Programs: All tuition and dorm fees are waived and provide NT\$10,000 (around US\$315) monthly stipend
- * Master Programs: All tuition is waived.
- * Undergraduate Programs: All tuition or 50% of tuition is waived.



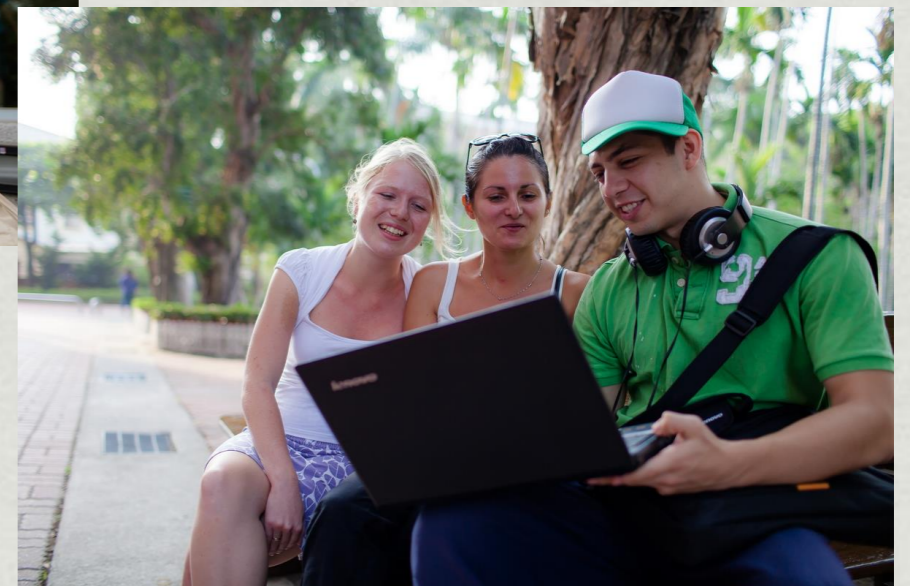
APPLICATION MATERIALS

- ✦ Application Form
- ✦ Signature of Declaration
- ✦ Official Graduation Degree or Diploma
- ✦ Academic Transcripts
- ✦ Letters of Recommendation
- ✦ Language Test Scores



FOR MORE INFORMATION:

<http://www.stust.edu.tw/en/node/admission>



Application Deadlines:

Fall Semester – May 15

Spring Semester -- December 1



[Come Visit Us. Let us give you a tour](#)

Southern Taiwan University of Science and Technology -- Tainan, Taiwan